

# TSB Loss Control Consultants



## Assisting Industry in the Protection of People, Property, and the Environment

### **Specializing in the Training of Industrial Emergency Response Personnel**

- **Industrial Fire Brigades  
(Incipient, Interior Structural, and Advanced Exterior)**
- **Hazardous Materials Emergency Response Teams**
- **Technical Rescue Teams  
(Confined Space/ High Angle)**
- **Inspection and Maintenance Personnel  
(Fire Protection Systems)**
- **Emergency Response Leaders, Directors,  
Managers and Trainers**

# TSB Loss Control Consultants

is a progressive emergency service training organization providing comprehensive training for emergency response personnel and those responsible for organizing, managing or directing emergency response activities. We also provide training for personnel who maintain and inspect equipment and materials necessary for an effective loss prevention program.

Located on a 328 acre campus in Rome, Georgia USA, our modern training center uses state-of-the-art equipment and provides realistic training experiences. We customize the training scenarios to closely match your specific facility needs. In addition to training programs on our campus, our all-inclusive custom designed training can be delivered and presented at any location you specify, worldwide.

TSB Loss Control Consultants' instructors are highly skilled at providing safe, realistic and meaningful training for your team members. Our staff is constantly striving to provide the best service to ensure that our clients receive the best training value possible. All TSB training programs are designed to assist companies in their efforts to comply with applicable laws, regulations, and standards. Examples include Occupational Safety and Health Administration (OSHA) and Environmental Protection Agency (EPA) regulations, National Fire Protection Association (NFPA) standards, and many other regulatory and voluntary consensus requirements impacting industrial emergency response operations.

TSB Loss Control Consultants can also assist you in many ways beyond training. We maintain a complete staff of professional emergency response consultants and thermograph/infrared specialists, with experience in all types of industry and emergency response. These skilled professionals can provide fire system inspections, in-house audits, on-call emergency response, as well as thermograph surveys.

## Burn Building

*"I am continually impressed with the training facility and the quality of instruction received at TSB Loss Control. The realism built into every exercise provides our team members insights not gained through conventional training programs."*

Cliff Claytor  
Emergency Response Coordinator  
Mead Corporation, Chillicothe, Ohio



- Multilevel structure for search and rescue training
- Multiple interior stairways
- Exterior stairway
- Various vertical and horizontal manways
- Heat detection equipment throughout the facility
- Sprinklers throughout the facility
- Tower for search and rescue training (specialized equipment for confined space and high angle rescue training)
- Various types of flooring (grating, metal deck, and concrete simulating various occupancies)
- Many ventilation points to include a cut away panel for ventilation training
- Electrical transformer simulator
- Two burn rooms
- Industrial (cage) ladders
- Fire department connection

### TSB LOSS CONTROL CONSULTANTS' FIRE TRAINING PROGRAMS

address all levels of fire fighting, from the basic incipient fire brigade activities to the interior structural/advanced exterior fire brigade operations as well as a higher level of training for the command officer/manager.

Our custom designed burn building was constructed to provide our clients with a safe and realistic training environment. Trainees are confronted with many challenging interior and exterior fire training exercises as well as other emergency response scenarios.

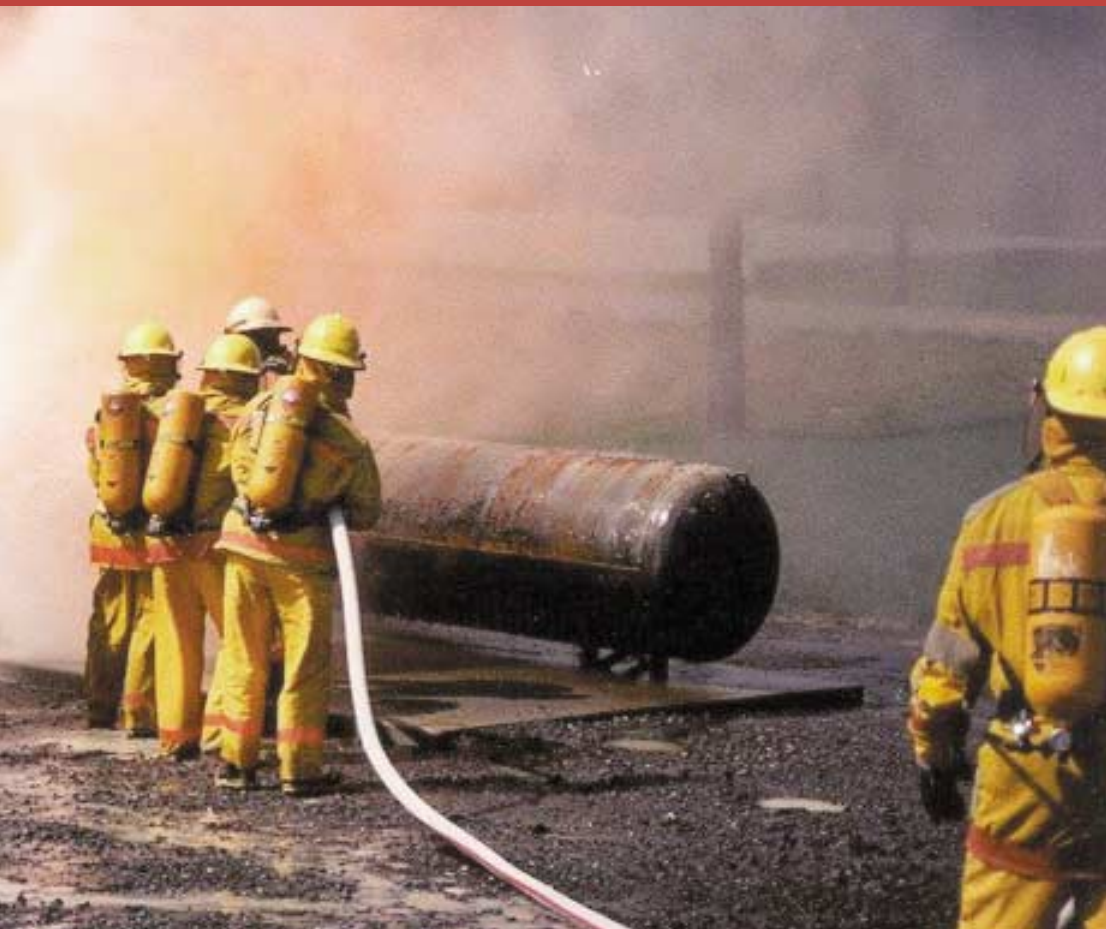
The building can provide multilevel search and rescue training, interior or exterior stairways and various vertical and horizontal manways. It contains two burn rooms and various types of flooring (grating, metal deck and concrete), as well as multiple ventilation points and sprinklers throughout (applied only as directed by instructors).

In addition, the building contains industrial cage ladders, Class III standpipe hose stations, fire department connections and a tower for search and rescue training. Specialized equipment provides training for confined space and high angle rescue and electrical transformer fire simulation.





# Flammable Gas



- LP-Gas tree fire
- LP-Gas tank fire
- LP-Gas leaking flange fire
- LP-Gas fork truck fire and simulated drive away accident
- LP-Gas line failure fire

*"We have found that TSB Loss Control instructors take a personal interest in our training and are sincerely interested in our Emergency Response Teams being the best that they can be."*

Mr. Harold Griffin  
Safety Coordinator &  
Emergency Response Team Chief  
Weyerhaeuser Company, Valliant, OK



## **TSB LOSS CONTROL CONSULTANTS' FLAMMABLE GAS TRAINING AREA**

provides challenging, yet safe, live LP-Gas fire training exercises. With federal regulations requiring fire fighters to receive training in the duties they may be expected to perform, the high quantity of pressurized gas used in industry today dictates the importance of this type of training.

All TSB Loss Control Consultants' training simulators have been engineered and are used by our instructors with safety as our primary concern. LP-Gas simulators include training scenarios for a gas tree fire, a gas tank fire, a leaking flange fire, a gas line failure fire, and an LP-Gas fueled fork truck fire and drive away accident.



*"We have found their level of professionalism in the field of Emergency Service Training to be unequalled."*

Mr. Mike Palmour  
Administrator of  
Emergency Services  
Lucent Technology, Norcross, GA



# Flammable & Combustible Liquids



- "L" shaped pit fire (simulating flammable or combustible liquid storage area)
- Fire extinguisher pit fire
- In-plant drain system fire (designed to simulate conditions within a facility where flammable/combustible liquid has been spilled into a drain that is covered with grating and is burning)
- Substation transformer fire (designed to provide a better understanding of the hazards associated with an emergency response to a burning transformer — includes a large transformer, flowing, burning liquid and a pit fire)
- Various portable simulators providing training experiences representative of the conditions common to industry (designed to meet the site specific needs of our clients and to provide added challenges for the trainee in the deployment of hose lines and in the use of portable fire extinguishers and heavy stream devices)

4

## THE FLAMMABLE AND COMBUSTIBLE LIQUIDS TRAINING AREA

provides many live fire opportunities for the trainee to learn offensive and defensive tactical operations. The pit fire area can be used to simulate a large liquid storage area fire, a fire extinguisher pit fire exercise, and a plant drain system fire. The plant drain system fire simulates conditions where a flammable/combustible liquid has been spilled into a drain that is covered with grating and is burning.

The area can also support a substation transformer fire simulation. This exercise provides the trainee with a better understanding of the hazards associated with an emergency response to a burning transformer. The project includes a large transformer, flowing/burning liquid and a pit fire.

This versatile training area can be configured for many different fire conditions common with industry flammable/combustible liquid fires. Projects can be designed that use both hose lines and portable fire extinguishers.





# Confined Space/High Angle Rescue



- A 65 foot training tower (simulates a variety of industrial rescue operations involving both confined space and high angles)
- An underground building (provides the maximum level of confined space training with an unparalleled level of safety)
- Tank projects designed for both vertical and horizontal extrication exercises
- Special purpose vessels (dryer cans, tanks, pipes, etc.) providing a hands on training experience that is industry specific
- Below grade confined space tunnel system (this rescue project includes various tunnels, access points, an above ground tank, and much more)

*"All of our continuous improvement programs begin with safety taking top priority and the partnership we have with TSB assures this."*

Mr. Larry D Gravette  
Human Resources Manager  
Inland Container Corporation  
Rome, GA



**TSB LOSS CONTROL CONSULTANTS** has some of the most sophisticated training facilities specifically designed to assist your personnel in facing technical rescue challenges.

Our 65 foot steel tower provides a training environment that can mimic those challenges found in high angle operations commonly encountered in the power generation industry, paper mills, chemical plants, semi-conductor, fiber optics, communications, and many other industries. We can conduct a wide variety of training exercises including elevator shaft rescues, rappelling operations, elevated stretcher movement, haul systems, and the advancement of hose lines in high rise structures.

A maze of underground pipes and tunnels connected to an underground building provide a maximum level of confined space training with an unparalleled level of safety. Below grade simulations can be structured to represent underground conveyors, drainage systems and connecting tunnels. Special purpose vessels are available such as paper machine dryer cans, tanks, pipes and more.

Participants experience challenges that range from negotiating small manways to operating in smoke filled atmospheres. Projects can be designed for both vertical and horizontal extrication exercises, and can be configured to represent a training experience that is industry specific.



# Hazardous Materials



- Railroad accident simulators (multiple tank cars, used with other training equipment and materials, provide an extraordinary level of realism to simulated incidents)
- Leaking tank simulator (a 10,000-gallon leaking tank provides detailed training in plugging, patching, spill containment, etc.)
- Leaking pipe racks (simulates various types of pipe line breaks, leaking valves, etc.)
- Chlorine and sulphur dioxide emergency response simulators (cylinders, containers, and tanks)
- Leaking drum simulators (provides detailed training on plugging, patching, over-packing, drum handling, and spill control)
- Various portable projects simulating hazardous materials incidents common to industry

**6** **OUR HAZARDOUS MATERIALS TRAINING PROGRAMS** are designed to meet the needs of today's emergency response personnel. TSB Loss Control Consultants provides hazardous materials training for awareness, operations and technicians personnel as well as those having more advanced and specialized needs.

A compliment of stationary and portable projects at our training center provide realistic training by simulating hazardous materials accidents and emergency conditions. Multiple railroad tank cars provide an extraordinary level of realism to the training. A 10,000-gallon tank provides response teams with detailed training in plugging and patching a leaking tank, and spill containment. Pipe racks provide participants with working conditions to confront various types of pipeline breaks, leaking valves and more.

In addition, on-site cylinders, containers and tanks can be configured to produce life-like chlorine emergencies. Our leaking drum simulation can provide emergency teams with detailed training on plugging, patching, over-packing, drum handling and spill control. TSB Loss Control Consultants is capable of providing your emergency response personnel with a training environment for most hazardous materials incidents common to industry.



*"We have compared TSB's training programs for Emergency Services with others and find they provide superior quality."*

Mr. Russ Kross  
Vice President, Human &  
Environmental Protection  
The Mead Corporation





# TSB Loss Control Consultants

Assisting Industry in the Protection  
of People, Property, and the Environment

## Specializing in the Training of Industrial Emergency Response Personnel

- **Industrial Fire Brigades**  
(Incipient, Interior Structural, and  
Advanced Exterior)
- **Hazardous Materials**  
Emergency Response Teams
- **Technical Rescue Teams**  
(Confined Space/ High Angle)
- **Inspection and Maintenance Personnel**  
(Fire Protection Systems)
- **Emergency Response Leaders, Directors,  
Managers and Trainers**



An **FM** Global Affiliate



**TSB Loss Control Consultants, Inc.**  
3940 Morton Bend Road, SW  
Rome, Georgia 30161  
(706) 291-1222  
[www.tsblosscontrol.com](http://www.tsblosscontrol.com)



**AERIAL VIEW OF THE TSB LOSS CONTROL TRAINING CENTER.**

An **FM** Global Affiliate

For additional copies of this publication or other FM Global resources call Customer Services in the United States at (781) 255-4681; (877) 364-6726 (toll free in U.S. and Canada); or fax (781) 255-0181.

Visit our Web site at [www.fmglobal.com](http://www.fmglobal.com)